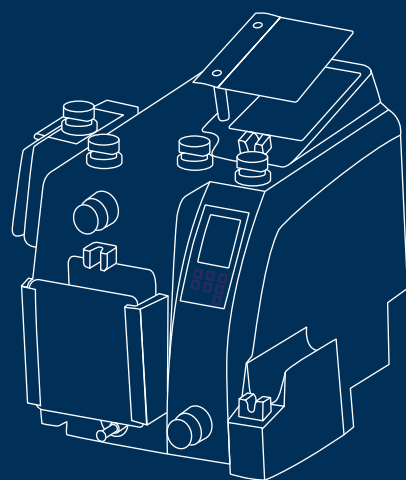


# TRANSFUSION TECHNOLOGY

## CompoMat G5

THE NEW GENERATION OF AUTOMATED  
BLOOD COMPONENT SEPARATOR



**FRESENIUS  
KABI**

caring for life

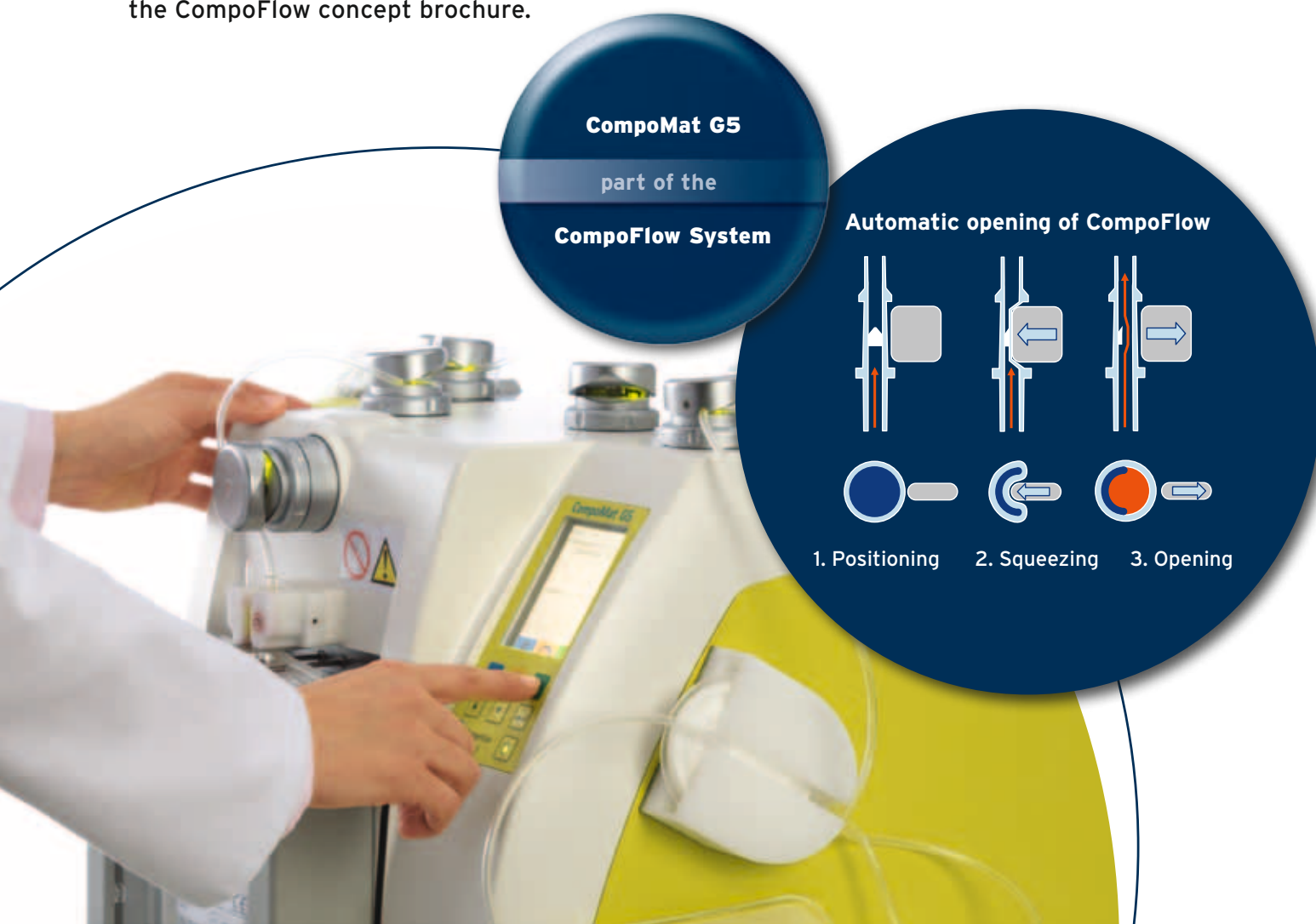
# CompoMat G5

## The new generation of automated blood processing

CompoMat G5, the successor of Compomat G4, is a highly efficient device for processing of whole blood units of all common bag brands. High flexibility allows easy adaption of the separation programs according to individual needs. The new generation provides substantial benefits in terms of quality, level of automation as well as health and safety.

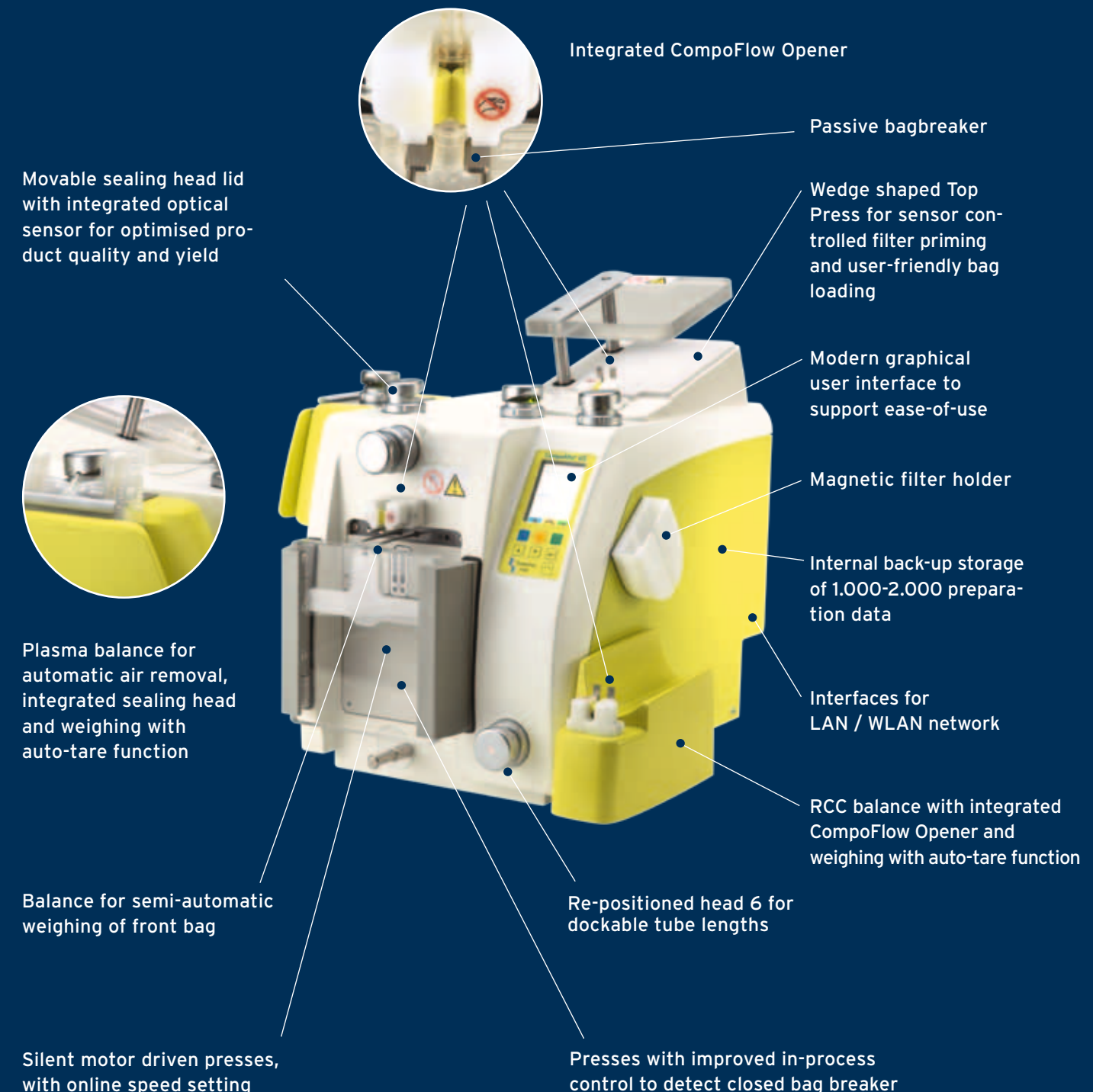
- **Reduced risk of RSI (Repetitive Strain Injuries) and haemolysis by automatic opening of the new bag closure CompoFlow**
- **Maximised efficiency and plasma yield by automated air removal and weighing of plasma bags in a single step**
- **Shortened separation time by simultaneous processing of program steps**
- **Optimal standardisation due to sensor controlled priming of in-line filters**
- **Innovative technological platform**

The CompoFlow concept offers an innovative, patent protected generation of disposables and devices allowing automatic opening of bag breakers. For more details please check the CompoFlow concept brochure.



# CompoMat G5

## Designed to be user friendly



## Automatic air removal and weighing of plasma bags in one single step

Removal of the air bubble and weighing of the plasma bag can be done on the new Plasma Unit in one single automated step. The auto-tare function allows storage of product net weights.

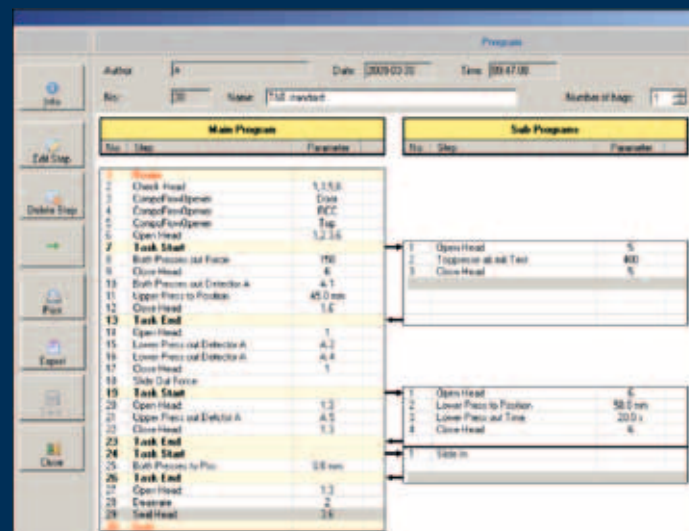
The unit is designed to avoid plasma loss during the removal process. The integrated sealing head realises a short tube lengths of just 3 cm to prevent loss of a plasma unit during freezing and thawing.



## Simultaneous processing of program steps to reduce separation time

To enhance efficiency and reduce separation time CompoMat G5 allows simultaneous processing of program steps. E.g. the priming of the filter is done during the separation of plasma concurrently.

Together with the new motor drive of the presses this feature reduces the processing time significantly. Additional CompoFlow reduces the separation time in comparison to standard blood bag system as the free lumen inside the tube is wider.



## Sensor controlled priming of in-line filters for optimal standardisation

The re-designed top press primes the in-line filter fully automatic and sensor controlled.

The wedge shape safeguards that the air bubble remains in the additive solution bag during the transfer process. The filter is therefore primed w/o air.

These are optimal conditions for a short and efficient filtration process, thus the risk of long filtration times, so called "long runner" and filter blockages is reduced.



## Innovative technological platform

The technological platform of CompoMat G5 is completely new and improved. Modern Ethernet technology connects up to 100 CompoMat via LAN or WLAN with the CompoMaster Net PC.

At the same time backward compatibility to the Compomat G4 network is guaranteed. CompoMaster Net is designed as an open system that is operating on a standard Windows XP computer.

The CompoMat G5 is powered by electricity and needs no external air pressure supply.

The modern graphic user interface guides the operator through the process and makes CompoMat G5 easy to use.

CompoMaster Net G5 provides automatic documentation of the separation in terms of GMP, and offers bi-directional interfacing to the blood bank information system.



## Ordering information

For more information, technical details and working instructions as well as equipment, please contact your local sales representative or call us directly.

### CompoMat® G5

9025501	CompoMat G5 including front balance and two CompoFlow Openers
9025511	RCC Unit including balance and CompoFlow Opener
9025521	Plasma Unit including balance, air removal plate, sealing head and optical sensor
9025531	Filter holder for FK hard- and soft housing RCC filter
9028931	Scanner for CompoMat G5
M674781	WLAN Stick for CompoMat G5
M674791	WLAN Access Point for CompoMaster Net G5
M674811	LAN Hub for cable network CompoMaster Net G5
M674801	ELT Box to connect a combined network of Compomat G4 and G5
9025541	CompoMaster Net G5 CD-ROM and IFU

### Technical data

Dimensions	W x D x H: 35 x 54 x 51 cm (G5 w/o PL- and RCC Unit) W x D x H: 44 x 54 x 51 cm (G5 with RCC Unit) W x D x H: 56 x 54 x 51 cm (G5 with RCC- and PL Unit)
Weight	30kg
Power supply	100 - 240V, 50 - 60Hz
Max. Power	
Consumption	240 VA
CE/MDD	CE/ MDD Class I 93/42/ECC
UL	UL approved
System requirements	The software CompoMaster Net G5 operates with the following systems: Intel compatible CPU      Min. 1.5GHz HDD                              Min. 20 GB RAM                             1.5 GB Monitor                        Min. 1042 x 768 resolution (xGA), 17" Monitor recommended CD/DVD drive, min. one free USB port (USB 2.0) Operation system            Windows XP / Vista



**FRESENIUS  
KABI**

caring for life

Fresenius Kabi Deutschland GmbH

Borkenberg 14 · D-61440 Oberursel · Germany

Phone: +49 (0) 6172 608-8499 · Fax: +49 (0) 6172 608-8498

[www.fresenius-kabi.com](http://www.fresenius-kabi.com)

### DISTRIBUIDOR:

**Soluciones y Material Quirurgico  
S.A. de C.V.**

Modesto Arreola 1351 PTE,  
Col. Centro, Monterrey, N.L.  
C.P. 64000.

Tel: 81 8340 9091 / 81 8445 8848  
[www.soluciones-sinteg.com](http://www.soluciones-sinteg.com)